



官网 Website



1688

中山一诺瓦照明科技有限公司
Zhongshan Corewatt Lighting Technology Co., Ltd

广东省中山市小榄镇顺成中心路24号1-5楼
1-5F, No.24, Shuncheng Central road, Xiaolan, Zhongshan, China

- ☎ 86-188 1339 8276
- 🕒 86-0760-8816 0588
- ✉ hank@corewatt.com
- 🌐 www.corewatt.com

SOLAR TECHNOLOGY



S M A R T S O L U T I O N L I G H T S

COREWATT

公司简介

一诺瓦位于世界灯具制造中心的中国中山市小榄镇，是专业的太阳能LED灯具制造商，专注于研发和生产智能、高品质的太阳能灯具。

有近10年的制造经验。每一个订单，品检员都会进行来料检验、EL测试、样品测试、小批量测试、生产自检、老化测试、包装检查等。公司严格执行ISO9001质量管理体系标准流程，把控好品质并且我们可以提供正规清关与运输所需的成品UN38.3,MSDS,运输安全鉴定报告，确保达到“乐享诺品质”。

一诺瓦致力于与客户建立相互信任、长久互利共赢的合作关系。专业的销售团队能够触碰到世界各地市场，基于对灯具&光伏&电池等行业、技术趋势、发展变化的深度理解，我们可以为我们直接的或间接的客户提供专业&可靠的支持。

Company Profile:

Corewatt is a professional solar LED lights manufacturer located in XiaoLan town, Zhongshan city, China. Focus on the research and development and production of intelligent and high-quality solar lamps.

More than 10 years experience of manufacture. Our QC team do Incoming Inspection, EL Test, Samples Test, Small Batch Production Test, Production Self Inspection, Aging Test, Packing Check.....for every order.We strictly implements the ISO9001 Quality Management System process to control products quality and we could provide UN38.3, MSDS, Transportation Safety Report of finished products for formal transportation. Choosing us means choosing to rest assure!

Corewatt has built on trusted, long-standing customer relationships and a professional sales team offering excellent reach and market access around the world,based on our in-depth understanding of solar LED lights industry, trending technologies and changing needs, we could support the specific and individual demands of both direct and indirect customers.

COMPANY SERVICES

公司服务

项目咨询服务

Project consulting service

为客户提供专属顾问，提供建议或解决方案，避免走弯路或浪费资金，协助客户选择先进适用的技术以更合理的价格获得更优质的产品。

方案制定服务

Solution formulation service

提供专业的建议和解决方案，避免走弯路或浪费资金，建议客户选择最新的方案以更合理的价格获得优质产品。

订单生产服务

Order production service

客户可以通过订单跟踪，实时了解订单进度和交付状态，当客户遇到问题时客服人员可以通过订单追踪快速定位问题并提供解决方案，从而提高客户满意度。

售后服务

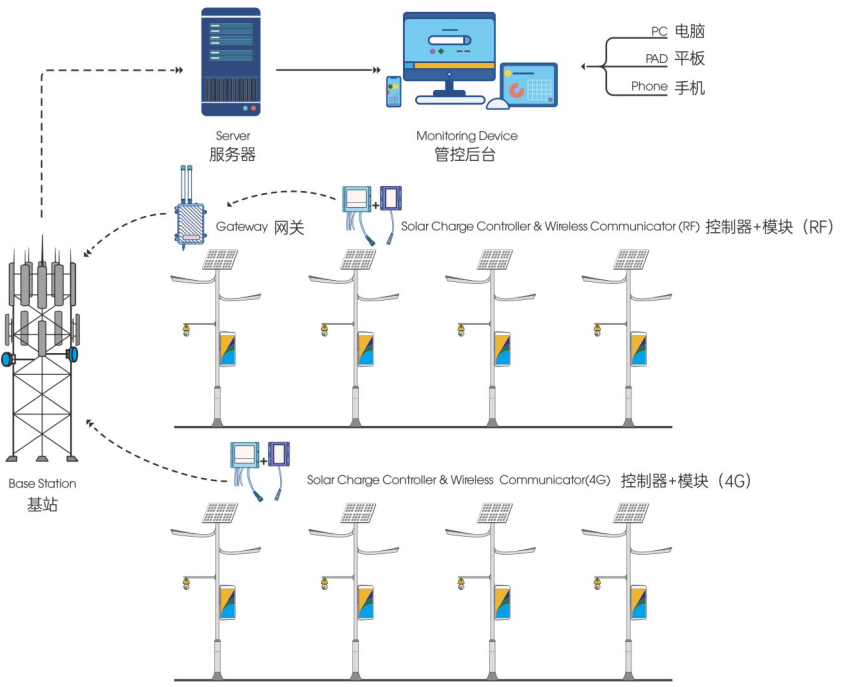
After-sales service

专业的售后服务团队，提供专业的解决方案和友好的服务态度，为客户提供产品保修、维护、保养等服务，帮助客户更好地使用产品。

SMART CONTROL SOLUTION

智能控制解决方案

应用 Application
远程控制太阳能灯具。
Remote lighting control of Solar lights, remote areas with unstable network and power supply.

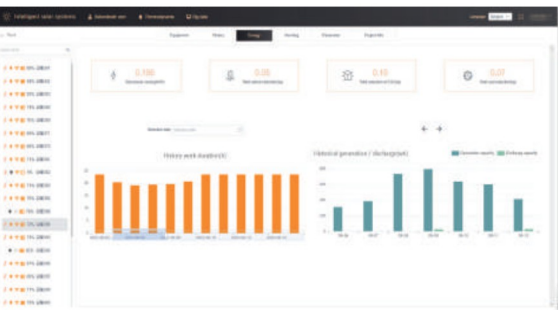


主要特征 Main Features

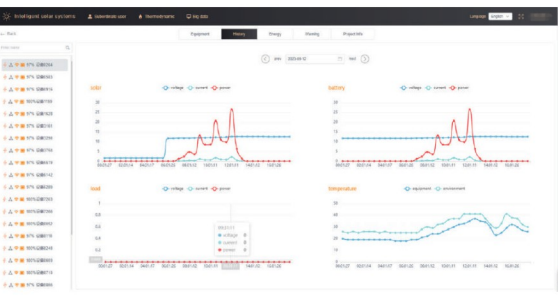
- 网关和4G移动通信可选。
- 通信模块和控制器一起控制太阳能灯具，监控电池状况，太阳能板和灯。
- 可以从控制平台控制亮灯时间和调节明亮。
- 对灯具、电池和太阳能板的损坏发出警报。
- RF-mesh and LTE communication available.
- The IoT communicator works with solar charging controller to control the solar lamps and monitor on the status of solar battery, panel and lamp.
- Lighting time and dimming plan from central management platform.
- Alarm on the lamp, battery and panel failure.



Energy statistics 能源统计

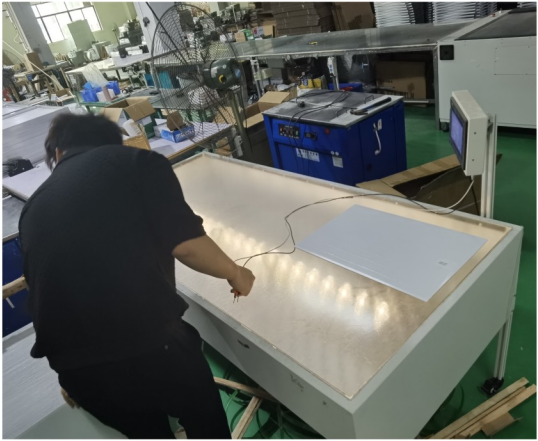


Historical data 历史数据



CERTIFICATES & TEST REPORTS

资质证书



光伏板瓦数测试 Solar Panel Wattage Test



EL测试 EL Test



灯珠测试 LED Test



电芯分容 Battery Test



首样测试 First Sample Test



ISO9001



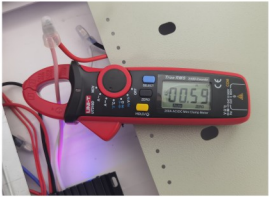
CE



RoHS



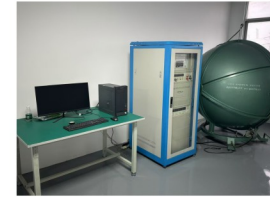
FCC



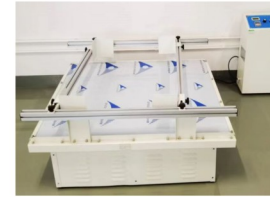
Production test 生产自检



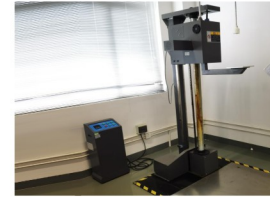
Aging test 半成品老化



Integrating sphere test 积分球测试



Vibration test 振动测试



Falling test 跌落测试



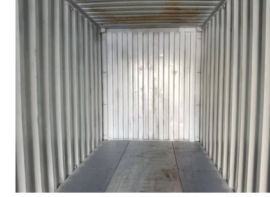
Accessories checking 配件检查



Packing inspection 包装检查



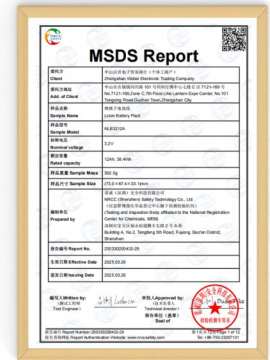
Warehouse inspection 仓库巡检



Container inspection 集装箱检查



QC Meeting 品控总结会



MSDS



UN38.3



Transport safety report 运输安全鉴定报告



Salt Spray Test Report 盐雾测试报告



一诺瓦在光能的核心，形态与流转间
如大地深沉的脉动，感知能量的韵律

自然的流转是最本真的节奏
雕琢能与天地共舞的能量，是我们永恒的追寻

Corewatt in the core, form and
circulation of solar energy like the deep
pulsation of the earth, perceive the
rhythm of energy, the natural flow is the
most authentic rhythm crafting the
energy that can dance with heaven and
earth is our eternal pursuit



产品目录

Product .Catalog

一体化太阳能路灯主干道系列 01-11
Main road ALL IN ONE solar street light series

一体化太阳能路灯乡村道路系列 12-19
Country road All IN ONE solar street light series

分体式内置电池太阳能路灯系列 20-30
Split type solar street light with inner battery series

太阳能庭院灯系列 31-33
Solar garden light series

太阳能投光灯系列 34-38
Solar flood light series

Main Road All In One Solar Street Light Series

一体化太阳能路灯主干道系列



Basic Parameters
基础参数

防护等级Waterproof grade	IP65
充电时间Charging time	6-8H
亮灯时间Lighting time	12H
色温Cct for choosing	6500K
工作温度Operation temperature	-40℃~+60℃
显色指数 Cri	70-90

Product features:
产品特点:

压铸+型材一体成型工艺，散热好，大功率。
Die-casting aluminum+aluminum profile with Integrated Molding Process, high heat-dissipation;high power wattage.

单个模组可调节角度。
The angle of each module is adjustable.

全新材料生产的透镜，耐紫外线，抗衰老，高透光率达94%。
UV resistant lens,made from new,never-used material,durable,high transmittance up to 94%.

高转化率单晶硅光伏板。
Equipped with high-efficiency monocrystalline silicon panel.

全新A品磷酸铁锂电池。
New lithium iron phosphare class A battery.

Application:
应用:

城市主干道或二级公路，大型广场，公园，停车场
Main road,Secondary roads,Square,Park,Parking lot



产品型号 Model no	灯体尺寸(mm) Lamp Size(mm)	光伏板尺寸(mm) Solar Panel Size(mm)	光伏板(单晶硅) Solar Panel(Mono)	电池容量 Battery Capacity	流明 Lumen	灯珠数 LED QTY	安装高度 Installation height	调控方式 Control Mode	感应 Induction	发光角度 Beam angle
SL-MSY5-2	1256*429*179	1157*398	18V90W	12.8V24AH	9000LM	7070*24pcs	6-8M	Light control+Remote control	Optional	70°145
SL-MSY5-3	1526*429*179	1431*398	18V110W	12.8V30AH	10000LM	7070*36pcs	6-8M	Light control+Remote control	Optional	70°145
SL-MSY5-4	1806*429*179	1710*398	18V140W	12.8V36AH	14000LM	7070*48pcs	8-10M	Light control+Remote control	Optional	70°145
SL-MSY5-5	2046*429*179	1950*398	18V160W	12.8V48AH	18000LM	7070*60pcs	9-12M	Light control+Remote control	Optional	70°145



Basic Parameters
基础参数

防护等级Waterproof grade	IP65
充电时间Charging time	6-8H
亮灯时间Lighting time	12H
色温Cct for choosing	6500K
工作温度Operation temperature	-40℃~+60℃
显色指数 Cri	70-90

Product features:
产品特点:

压铸一体成型+钣金冲压工艺，有效降低成本并保持高品质。
Die-casting aluminum with Integrated Molding Process+iron material with Sheet Metal Forming Process,cost competitive and high quality.

全新材料生产的透镜，耐紫外线，抗衰老，高透光率达94%。
UV resistant lens,made from new,never-used material,durable,high transmittance up to 94%.

高转化率单晶硅光伏板。
Equipped with high-efficiency monocrystalline silicon panel.

全新A品磷酸铁锂电池。
New lithium iron phosphare class A battery.

Application:
应用:

城市主干道或二级公路，大型广场，公园，停车场
Main road,Secondary roads,Square,Park,Parking lot

产品型号 Model no	灯体尺寸(mm) Lamp Size(mm)	光伏板尺寸(mm) Solar Panel Size(mm)	光伏板(单晶硅) Solar Panel(Mono)	电池容量 Battery Capacity	流明 Lumen	灯珠数 LED QTY	安装高度 Installation height	调控方式 Control Mode	感应 Induction	发光角度 Beam angle
SL-MSY4-4	1436*400*204	1434*398	18V110W	12.8V30AH	14000LM	5054*200PCS	6-8M	Light control+Remote control	Optional	70°145
SL-MSY4-5	1713*400*204	1712*398	18V140W	12.8V36AH	16000LM	5054*250PCS	8-10M	Light control+Remote control	Optional	70°145

SL-MSY4-6	1954*400*204	1952*398	18V160W	12.8V 48AH	18000LM	5054*300PCS	9-12M	Light control+Remote control	Optional	70°145
-----------	--------------	----------	---------	------------	---------	-------------	-------	------------------------------	----------	--------



Basic Parameters
基础参数

防护等级Waterproof grade	IP65
充电时间Charging time	6-8H
亮灯时间Lighting time	12H
色温Cct for choosing	6500K
工作温度Operation temperature	-40℃~+60℃
显色指数 Cri	70-90

Product features:
产品特点:

三块太阳能板结构设计，充电更快，瓦数高。
Three pieces solar panels constructure designing, more fast charging, higher power.

钣金冲压+型材一体成型工艺，散热好，大功率。
Aluminum with Sheet Metal Forming process+aluminum profile with Integrated Molding Process,high heat-dissipation,high power wattage.

全新材料生产的透镜，耐紫外线，抗衰老，高透光率达94%。
UV resistant lens,made from new,never-used material,durable,high transmittance up to 94%.

全新A品磷酸铁锂电池。
New lithium iron phosphare class A battery.

Application:
应用:

城市主干道或二级公路，大型广场，公园，停车场
Main road,Secondary roads,Square,Park,Parking lot

产品型号 Model no	灯体尺寸(mm) Lamp Size(mm)	光伏板尺寸(mm) Solar Panel Size(mm)	光伏板(单晶硅) Solar Panel(Mono)	电池容量 Battery Capacity	流明 Lumen	灯珠数 LED QTY	安装高度 Installation height	调控方式 Control Mode	感应 Induction	发光角度 Beam angle
SL-MSJK-50	916*363*58	820*331*3PCS	18V150W	12.8V48AH	18000LM	5054*150PCS	9-12M	Light control+Remote control	Optional	75°150
SL-MSJK-60	1096*363*58	1000*331*3PCS	18V180W	12.8V54AH	22000LM	5054*200PCS	10-14M	Light control+Remote control	Optional	75°150



Basic Parameters
基础参数

防护等级Waterproof grade	IP65
充电时间Charging time	6-8H
亮灯时间Lighting time	12H
色温Cct for choosing	6500K
工作温度Operation temperature	-40℃~+60℃
显色指数 Cri	70-90

Product features:
产品特点:

钣金冲压+型材一体成型工艺，散热好，大功率。
Aluminum with Sheet Metal Forming process+die-casting aluminum with Integrated Molding Process, high heat-dissipation,high power wattage.

全新材料生产的透镜，耐紫外线，抗衰老，高透光率达94%。
UV resistant lens,made from new,never-used material,durable,high transmittance up to 94%.

高转化率单晶硅光伏板。
Equipped with high-efficiency monocrystalline silicon panel.

全新A品磷酸铁锂电池。
New lithium iron phosphore class A battery.

Application:
应用:

城市主干道或二级公路，大型广场，公园，停车场
Main road,Secondary roads,Square,Park,Parking lot

产品型号 Model no	灯体尺寸(mm) Lamp Size(mm)	光伏板尺寸(mm) Solar Panel Size(mm)	光伏板(单晶硅) Solar Panel(Mono)	电池容量 Battery Capacity	流明 Lumen	灯珠数 LED QTY	安装高度 Installation height	调控方式 Control Mode	感应 Induction	发光角度 Beam angle
SL-MSJX-3	902*402*50	885*385	5V50W	3.2V45AH	8000LM	5054*150PCS	5-7M	Light control+Remote control	Optional	75°150
SL-MSJX-4	1137*402*50	1120*385	5V70W	3.2V60AH	8500LM	5054*200PCS	6-8M	Light control+Remote control	Optional	75°150
SL-MSJX-5	1297*405*50	1280*385	18V80W	12.8V24AH	9000LM	5054*250PCS	6-8M	Light control+Remote control	Optional	75°150
SL-MSJX-6	1497*402*50	1480*385	18V90W	12.8V30AH	10000LM	5054*300PCS	6-8M	Light control+Remote control	Optional	75°150



Basic Parameters
基础参数

防护等级Waterproof grade	IP65
充电时间Charging time	6-8H
亮灯时间Lighting time	12H
色温Cct for choosing	6500K
工作温度Operation temperature	-40℃~+60℃
显色指数 Cri	70-90

Product features:
产品特点:

独特外观设计，简洁且流畅。
Unique appearance designing,concise and smooth.

钣金冲压工艺,有效降低成本并保持高品质。
Iron material with Sheet Metal Forming process,cost competitive and high quality.

全新材料生产的透镜，耐紫外线，抗衰老，高透光率达94%。
UV resistant lens,made from new,never-used material,durable,high transmittance up to 94%.

高转化率单晶硅光伏板。
Equipped with high-efficiency monocrystalline silicon panel.

全新A品磷酸铁锂电池。
New lithium iron phosphore class A battery.

Application:
应用:

城市主干道或二级公路，大型广场，公园，停车场
Main road,Secondary roads,Square,Park,Parking lot

产品型号 Model no	灯体尺寸(mm) Lamp Size(mm)	光伏板尺寸(mm) Solar Panel Size(mm)	光伏板(单晶硅) Solar Panel(Mono)	电池容量 Battery Capacity	流明 Lumen	灯珠数 LED QTY	安装高度 Installation height	调控方式 Control Mode	感应 Induction	发光角度 Beam angle
SL-MSQM-3	910*400*280	906*396	5V65W	3.2V45AH	8000LM	5054*150PCS	5-7M	Light control+Remote control	Optional	70°140
SL-MSQM-4	1168*400*280	1164*396	5V90W	3.2V60AH	8500LM	5054*200PCS	6-8M	Light control+Remote control	Optional	70°140

SL-MSQM-6	1528*400*280	1524*396	5V120W	3.2V90AH	12000LM	5054*300PCS	8-10M	Light control+Remote control	Optional	70°140
-----------	--------------	----------	--------	----------	---------	-------------	-------	------------------------------	----------	--------



Basic Parameters
基础参数

防护等级Waterproof grade	IP65
充电时间Charging time	6-8H
亮灯时间Lighting time	12H
色温Cct for choosing	6500K
工作温度Operation temperature	-40℃~+60℃
显色指数 Cri	70-90

Product features:
产品特点:

独特外观设计，简洁且流畅。
Unique appearance designing,concise and smooth.

钣金冲压工艺,有效降低成本并保持高品质。
Iron material with Sheet Metal Forming process,cost competitive and high quality.

全新材料生产的透镜，耐紫外线，抗衰老，高透光率达94%。
UV resistant lens,made from new,never-used material,durable,high transmittance up to 94%.

高转化率单晶硅光伏板。
Equipped with high-efficiency monocrystalline silicon panel.

全新A品磷酸铁锂电池。
New lithium iron phosphare class A battery.

Application:
应用:

城市主干道或二级公路，大型广场，公园，停车场
Main road,Secondary roads,Square,Park,Parking lot

产品型号 Model no	灯体尺寸(mm) Lamp Size(mm)	光伏板尺寸(mm) Solar Panel Size(mm)	光伏板(单晶硅) Solar Panel(Mono)	电池容量 Battery Capacity	流明 Lumen	灯珠数 LED QTY	安装高度 Installation height	调控方式 Control Mode	感应 Induction	发光角度 Beam angle
SL-MSQY-S	910*400*280	906*396	5V65W	3.2V45AH	8000LM	5054*150PCS	5-7M	Light control+Remote control	Optional	70°140
SL-MSQY-M	1168*400*280	1164*396	5V90W	3.2V60AH	8500LM	5054*213PCS	6-8M	Light control+Remote control	Optional	70°140

SL-MSQY-L	1528*400*280	1524*396	5V120W	3.2V90AH	12000LM	5054*300PCS	8-10M	Light control+Remote control	Optional	70°140
-----------	--------------	----------	--------	----------	---------	-------------	-------	------------------------------	----------	--------



Basic Parameters
基础参数

防护等级Waterproof grade	IP65
充电时间Charging time	6-8H
亮灯时间Lighting time	12H
色温Cct for choosing	6500K
工作温度Operation temperature	-40℃~+60℃
显色指数 Cri	70-90

Product features:
产品特点:

钣金激光切割和铝型材工艺，产品扩展性强。
Aluminum with Laser Cutting Process+aluminum profile with Integrated Molding Process,flexible customization.

全新材料生产的透镜，耐紫外线，抗衰老，高透光率达94%。
UV resistant lens,made from new,never-used material,durable,high transmittance up to 94%.

高转化率单晶硅光伏板。
Equipped with high-efficiency monocrystalline silicon panel.

全新A品磷酸铁锂电池。
New lithium iron phosphare class A battery.

Application:
应用:

城市主干道或二级公路，大型广场，公园，停车场
Main road,Secondary roads,Square,Park,Parking lot

产品型号 Model no	灯体尺寸(mm) Lamp Size(mm)	光伏板尺寸(mm) Solar Panel Size(mm)	光伏板(单晶硅) Solar Panel(Mono)	电池容量 Battery Capacity	流明 Lumen	灯珠数 LED QTY	安装高度 Installation height	调控方式 Control Mode	感应 Induction	发光角度 Beam angle
SL-MSYJ-3	895*410*50	885*385	5V65W	3.2V45AH	8000LM	3030*150PCS	5-7M	Light control+Remote control	Optional	75°150
SL-MSYJ-4	1130*410*50	1120*385	5V85W	3.2V60AH	8500LM	3030*200PCS	6-8M	Light control+Remote control	Optional	75°150

SL-MSYJ-5	1290*410*50	1280*385	5V95W	3.2V75AH	10000LM	3030*250PCS	6-8M	Light control+Remote control	Optional	75°150
-----------	-------------	----------	-------	----------	---------	-------------	------	------------------------------	----------	--------

SL-MSYJ-6	1490*410*50	1480*385	5V110W	3.2V90AH	12000LM	3030*300PCS	8-10M	Light control+Remote control	Optional	75°150
-----------	-------------	----------	--------	----------	---------	-------------	-------	------------------------------	----------	--------



Basic Parameters
基础参数

防护等级Waterproof grade	IP65
充电时间Charging time	6-8H
亮灯时间Lighting time	12H
色温Cct for choosing	6500K
工作温度Operation temperature	-40℃~+60℃
显色指数 Cri	70-90

Product features:
产品特点:

钣金激光切割和铝型材工艺，产品扩展性强。
Aluminum with Laser Cutting Process+aluminum profile with Integrated Molding Process,flexible customization.

全新材料生产的透镜，耐紫外线，抗衰老，高透光率达94%。
UV resistant lens,made from new,never-used material,durable,high transmittance up to 94%.

高转化率单晶硅光伏板。
Equipped with high-efficiency monocrystalline silicon panel.

全新A品磷酸铁锂电池。
New lithium iron phosphore class A battery.

Application:
应用:

城市主干道或二级公路，大型广场，公园，停车场
Main road,Secondary roads,Square,Park,Parking lot

产品型号 Model no	灯体尺寸(mm) Lamp Size(mm)	光伏板尺寸(mm) Solar Panel Size(mm)	光伏板(单晶硅) Solar Panel(Mono)	电池容量 Battery Capacity	流明 Lumen	灯珠数 LED QTY	安装高度 Installation height	调控方式 Control Mode	感应 Induction	发光角度 Beam angle
SL-MSYY-4	925*425	885*385	5V65W	3.2V45AH	8000LM	5054*36pcs	5-7M	Light control+Remote control	Optional	70°140
SL-MSYY-8	1160*425	1120*385	5V85W	3.2V60AH	8500LM	5054*72pcs	6-8M	Light control+Remote control	Optional	70°140
SL-MSYY-12	1320*425	1280*385	5V95W	3.2V75AH	10000LM	5054*108pcs	6-8M	Light control+Remote control	Optional	70°140
SL-MSYY-16	1520*425	1480*385	5V110W	3.2V90AH	12000LM	5054*144pcs	8-10M	Light control+Remote control	Optional	70°140
SL-MSYY-20	1760*425	1720*385	18V120W	12.8V36AH	16000LM	5054*180pcs	8-10M	Light control+Remote control	Optional	70°140



Basic Parameters
基础参数

防护等级Waterproof grade	IP65
充电时间Charging time	6-8H
亮灯时间Lighting time	12H
色温Cct for choosing	6500K
工作温度Operation temperature	-40℃~+60℃
显色指数 Cri	70-90

Product features:
产品特点:

钣金冲压工艺，有效降低成本并保持高品质。
Iron material with Sheet Metal Forming Process,cost competitive and high quality.

全新材料生产的透镜，耐紫外线，抗衰老，高透光率达94%。
UV resistant lens,made from new,never-used material,durable,high transmittance up to 94%.

高转化率单晶硅光伏板。
Equipped with high-efficiency monocrystalline silicon panel.

全新A品磷酸铁锂电池。
New lithium iron phosphore class A battery.

Application:
应用:

城市主干道或二级公路，大型广场，公园，停车场
Main road,Secondary roads,Square,Park,Parking lot

产品型号 Model no	灯体尺寸(mm) Lamp Size(mm)	光伏板尺寸(mm) Solar Panel Size(mm)	光伏板(单晶硅) Solar Panel(Mono)	电池容量 Battery Capacity	流明 Lumen	灯珠数 LED QTY	安装高度 Installation height	调控方式 Control Mode	感应 Induction	发光角度 Beam angle
SL-MSY7-3	887*400*63	885*398	6V60W	3.2V45AH	8000LM	5054*150PCS	5-7M	Light control+Remote control	Optional	70°145
SL-MSY7-4	1160*400*63	1157*398	6V80W	3.2V60AH	8500LM	5054*200PCS	6-8M	Light control+Remote control	Optional	70°145
SL-MSY7-5	1435*400*63	1434*398	6V100W	3.2V75AH	10000LM	5054*250PCS	6-8M	Light control+Remote control	Optional	70°145



Basic Parameters
基础参数

防护等级Waterproof grade	IP65
充电时间Charging time	6-8H
亮灯时间Lighting time	12H
色温Cct for choosing	6500K
工作温度Operation temperature	-40℃~+60℃
显色指数 Cri	70-90

Product features:
产品特点:

钣金冲压工艺，有效降低成本并保持高品质。
Iron material with Sheet Metal Forming Process, cost competitive and high quality.

全新材料生产的透镜，耐紫外线，抗衰老，高透光率达94%。
UV resistant lens, made from new, never-used material, durable, high transmittance up to 94%.

高转化率单晶硅光伏板。
Equipped with high-efficiency monocrystalline silicon panel.

全新A品磷酸铁锂电池。
New lithium iron phosphore class A battery.

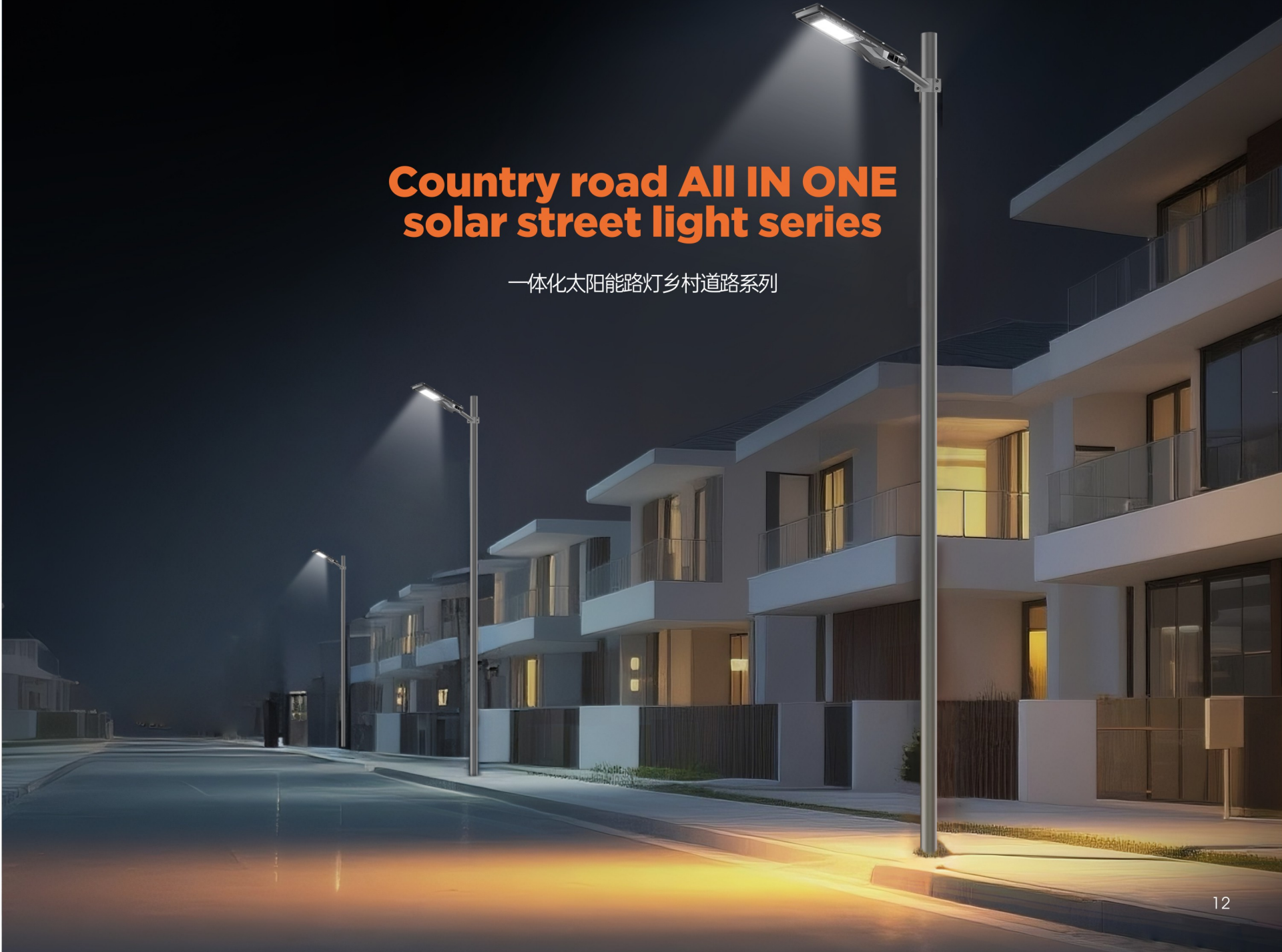
Application:
应用:

城市主干道或二级公路，大型广场，公园，停车场
Main road, Secondary roads, Square, Park, Parking lot

产品型号 Model no	灯体尺寸(mm) Lamp Size(mm)	光伏板尺寸(mm) Solar Panel Size(mm)	光伏板(单晶硅) Solar Panel(Mono)	电池容量 Battery Capacity	流明 Lumen	灯珠数 LED QTY	安装高度 Installation height	调控方式 Control Mode	感应 Induction	发光角度 Beam angle
SL-MSY11-4	695*348*63	691*344	6V40W	3.2V30AH	7000LM	5054*36PCS	4-6M	Light control+Remote control	Optional	70°140
SL-MSY11-8	887*400*63	885*398	6V60W	3.2V45AH	8000LM	5054*72PCS	5-7M	Light control+Remote control	Optional	70°140
SL-MSY11-12	1160*400*63	1157*398	6V80W	3.2V60AH	8500LM	5054*108PCS	6-8M	Light control+Remote control	Optional	70°140
SL-MSY11-16	1435*400*63	1434*398	6V100W	3.2V75AH	10000LM	5054*144PCS	6-8M	Light control+Remote control	Optional	70°140
SL-MSY11-20	1714*400*63	1712*398	18V120W	12.8V36AH	16000LM	5054*180PCS	8-10M	Light control+Remote control	Optional	70°140

Country road All IN ONE solar street light series

一体化太阳能路灯乡村道路系列





Basic Parameters
基础参数

防护等级Waterproof grade	IP65
充电时间Charging time	4-5H
亮灯时间Lighting time	12H
色温Cct for choosing	6500K
工作温度Operation temperature	-40℃~+60℃
显色指数 Cri	70-90

Product features:
产品特点:

压铸一体成型工艺，散热好，大功率。
Die-casting aluminum with Integrated Molding Process,high heat-dissipation,high power wattage.

模组式设计，任意定制。
Module designing,flexible customization.

全新材料生产的透镜，耐紫外线，抗衰老，高透光率达94%。
UV resistant lens,made from new,never-used material,durable,high transmittance up to 94%.

高转化率单晶硅光伏板。
Equipped with high-efficiency monocrystalline silicon panel.

全新A品磷酸铁锂电池。
New lithium iron phosphare class A battery.

Application:
应用:

乡村道路，二级公路，家庭小院，公园.....
Country road,Secondary roads,Family garden,Park.....

产品型号 Model no	灯体尺寸(mm) Lamp Size(mm)	光伏板尺寸(mm) Solar Panel Size(mm)	光伏板(单晶硅) Solar Panel(Mono)	电池容量 Battery Capacity	流明 Lumen	灯珠数 LED QTY	安装高度 Installation height	调控方式 Control Mode	感应 Induction	发光角度 Beam angle
SL-CSDS-1	756*360*84	671*336	5V40W	3.2V30AH	6000LM	5054*72PCS	4-6M	Light control+Remote control	Optional	70*140
SL-CSDS-2	914*360*84	829*336	5V48W	3.2V45AH	7000LM	5054*144PCS	5-7M	Light control+Remote control	Optional	70*140
SL-CSDS-3	1072*360*84	987*336	5V60W	3.2V45AH	8000LM	5054*216PCS	6-8M	Light control+Remote control	Optional	70*140
SL-CSDS-4	1230*360*84	1145*336	5V70W	3.2V60AH	8500LM	5054*288PCS	6-8M	Light control+Remote control	Optional	70*140



Basic Parameters
基础参数

防护等级Waterproof grade	IP65
充电时间Charging time	4-5H
亮灯时间Lighting time	12H
色温Cct for choosing	6500K
工作温度Operation temperature	-40℃~+60℃
显色指数 Cri	70-90

Product features:
产品特点:

压铸一体成型工艺，散热好，大功率。
Die-casting aluminum with Integrated Molding Process,high heat-dissipation,high power wattage.

全新材料生产的透镜，耐紫外线，抗衰老，高透光率达94%。
UV resistant lens,made from new,never-used material,durable,high transmittance up to 94%.

高转化率单晶硅光伏板。
Equipped with high-efficiency monocrystalline silicon panel.

全新A品磷酸铁锂电池。
New lithium iron phosphare class A battery.

Application:
应用:

乡村道路，二级公路，家庭小院，公园.....
Country road,Secondary roads,Family garden,Park.....

产品型号 Model no	灯体尺寸(mm) Lamp Size(mm)	光伏板尺寸(mm) Solar Panel Size(mm)	光伏板(单晶硅) Solar Panel(Mono)	电池容量 Battery Capacity	流明 Lumen	灯珠数 LED QTY	安装高度 Installation height	调控方式 Control Mode	感应 Induction	发光角度 Beam angle
SL-CSLH-3	703*365*87	672*339.5	4.5V45W	3.2V45AH	6000LM	3030*306PCS	4-6M	Light control+Remote control	No	70*140
SL-CSLH-4	810*365*87	778*339.5	4.5V50W	3.2V45AH	7000LM	3030*408PCS	5-7M	Light control+Remote control	No	70*140
SL-CSLH-5	916*365*87	885*339.5	4.5V55W	3.2V60AH	8500LM	3030*510PCS	6-8M	Light control+Remote control	No	70*140



Basic Parameters
基础参数

防护等级Waterproof grade	IP65
充电时间Charging time	4-5H
亮灯时间Lighting time	12H
色温Cct for choosing	6500K
工作温度Operation temperature	-40℃~+60℃
显色指数 Cri	70-90

Product features:
产品特点:

压铸一体成型工艺，散热好，大功率。
Die-casting aluminum with Integrated Molding Process,high heat-dissipation,high power wattage.

全新材料生产的透镜，耐紫外线，抗衰老，高透光率达94%。
UV resistant lens,made from new,never-used material,durable,high transmittance up to 94%.

高转化率单晶硅光伏板。
Equipped with high-efficiency monocrystalline silicon panel.

全新A品磷酸铁锂电池。
New lithium iron phosphare class A battery.

Application:
应用:

乡村道路，二级公路，家庭小院，公园.....
Country road,Secondary roads,Family garden,Park.....

产品型号 Model no	灯体尺寸(mm) Lamp Size(mm)	光伏板尺寸(mm) Solar Panel Size(mm)	光伏板(单晶硅) Solar Panel(Mono)	电池容量 Battery Capacity	流明 Lumen	灯珠数 LED QTY	安装高度 Installation height	调控方式 Control Mode	感应 Induction	发光角度 Beam angle
SL-CSJG-S	810*292*85	664*264	5V32W	3.2V30AH	6000LM	5054*80PCS	4-6M	Light control+Remote control	Optional	70*140
SL-CSJG-L	1010*380*86	875*353	4.5V60W	3.2V60AH	9000LM	5054*200PCS	6-8M	Light control+Remote control	Optional	70*140



Basic Parameters
基础参数

防护等级Waterproof grade	IP65
充电时间Charging time	4-5H
亮灯时间Lighting time	12H
色温Cct for choosing	6500K
工作温度Operation temperature	-40℃~+60℃
显色指数 Cri	70-90

Product features:
产品特点:

独特外观设计，简洁且流畅。
Unique appearance designing,concise and smooth.

钣金冲压工艺，有效降低成本并保持高品质。
Iron material with Sheet Metal Forming process,cost competitive and high quality.

全新材料生产的透镜，耐紫外线，抗衰老，高透光率达94%。
UV resistant lens,made from new,never-used material,durable,high transmittance up to 94%.

高转化率单晶硅光伏板。
Equipped with high-efficiency monocrystalline silicon panel.

全新A品磷酸铁锂电池。
New lithium iron phosphare class A battery.

Application:
应用:

乡村道路，二级公路，家庭小院，公园.....
Country road,Secondary roads,Family garden,Park.....

产品型号 Model no	灯体尺寸(mm) Lamp Size(mm)	光伏板尺寸(mm) Solar Panel Size(mm)	光伏板(单晶硅) Solar Panel(Mono)	电池容量 Battery Capacity	流明 Lumen	灯珠数 LED QTY	安装高度 Installation height	调控方式 Control Mode	感应 Induction	发光角度 Beam angle
SL-CSQ2M-2	618*300*158	617*296	5V30W	3.2V 30AH	6000LM	5054*100PCS	4-6M	Light control+Remote control	Optional	70*140
SL-CSQ2M-3	798*300*158	794*296	5V40W	3.2V 45AH	7000LM	5054*150PCS	5-7M	Light control+Remote control	Optional	70*140
SL-CSQ2M-4	892*320*168	889*316	5V50W	3.2V 60AH	8000LM	5054*200PCS	6-8M	Light control+Remote control	Optional	70*140



Basic Parameters
基础参数

防护等级Waterproof grade	IP65
充电时间Charging time	4-5H
亮灯时间Lighting time	12H
色温Cct for choosing	6500K
工作温度Operation temperature	-40℃~+60℃
显色指数 Cri	70-90

Product features:
产品特点:

独特外观设计，简洁且流畅。
Unique appearance designing,concise and smooth.

钣金冲压工艺，有效降低成本并保持高品质。
Iron material with Sheet Metal Forming process,cost competitive and high quality.

全新材料生产的透镜，耐紫外线，抗衰老，高透光率达94%。
UV resistant lens,made from new,never-used material,durable,high transmittance up to 94%.

高转化率单晶硅光伏板。
Equipped with high-efficiency monocrystalline silicon panel.

全新A品磷酸铁锂电池。
New lithium iron phosphare class A battery.

Application:
应用:

乡村道路，二级公路，家庭小院，公园.....
Country road,Secondary roads,Family garden,Park.....

产品型号 Model no	灯体尺寸(mm) Lamp Size(mm)	光伏板尺寸(mm) Solar Panel Size(mm)	光伏板(单晶硅) Solar Panel(Mono)	电池容量 Battery Capacity	流明 Lumen	灯珠数 LED QTY	安装高度 Installation height	调控方式 Control Mode	感应 Induction	发光角度 Beam angle
SL-CSQ2Y-S	618*300*158	617*296	5V30W	3.2V 30AH	6000LM	5054*60PCS	4-6M	Light control+Remote control	Optional	70°140
SL-CSQ2Y-M	798*300*158	794*296	5V40W	3.2V 45AH	7000LM	5054*100PCS	5-7M	Light control+Remote control	Optional	70°140

SL-CSQ2Y-L	892*320*168	889*316	5V50W	3.2V 60AH	8000LM	5054*150PCS	6-8M	Light control+Remote control	Optional	70°140
------------	-------------	---------	-------	-----------	--------	-------------	------	------------------------------	----------	--------



Basic Parameters
基础参数

防护等级Waterproof grade	IP65
充电时间Charging time	4-5H
亮灯时间Lighting time	12H
色温Cct for choosing	6500K
工作温度Operation temperature	-40℃~+60℃
显色指数 Cri	70-90

Product features:
产品特点:

独特外观设计，简洁且流畅。
Unique appearance designing with muscle sensation and visual impact.

ABS注塑工艺，有效降低成本并保持高品质。
ABS material with Injection Molding process,cost competitive and high quality.

全新材料生产的透镜，耐紫外线，抗衰老，高透光率达94%。
UV resistant lens,made from new,never-used material,durable,high transmittance up to 94%.

高转化率单晶硅光伏板。
Equipped with high-efficiency monocrystalline silicon panel.

全新A品磷酸铁锂电池。
New lithium iron phosphare class A battery.

Application:
应用:

乡村道路，二级公路，家庭小院，公园.....
Country road,Secondary roads,Family garden,Park.....

产品型号 Model no	灯体尺寸(mm) Lamp Size(mm)	光伏板尺寸(mm) Solar Panel Size(mm)	光伏板(单晶硅) Solar Panel(Mono)	电池容量 Battery Capacity	流明 Lumen	灯珠数 LED QTY	安装高度 Installation height	调控方式 Control Mode	感应 Induction	发光角度 Beam angle
SL-CSBX-S	725*345*77	610*339.5	4.5V40W	3.2V 30AH	6000LM	5054*150PCS	4-6M	Light control+Remote control	No	70°140
SL-CSBX-L	897*345*77	775*339.5	4.5V50W	3.2V 45AH	7000LM	5054*200PCS	5-7M	Light control+Remote control	No	70°140



Basic Parameters
基础参数

防护等级Waterproof grade	IP65
充电时间Charging time	4-5H
亮灯时间Lighting time	12H
色温Cct for choosing	6500K
工作温度Operation temperature	-40℃~+60℃
显色指数 Cri	70-90

Product features:
产品特点:

独特外观设计，简洁且流畅。
Unique appearance designing,concise and smooth.

钣金冲压工艺，有效降低成本并保持高品质。
Iron material with Sheet Metal Forming process,cost competitive and high quality.

全新材料生产的透镜，耐紫外线，抗衰老，高透光率达94%。
UV resistant lens,made from new,never-used material,durable,high transmittance up to 94%.

高转化率单晶硅光伏板。
Equipped with high-efficiency monocrystalline silicon panel.

全新A品磷酸铁锂电池。
New lithium iron phosphare class A battery.

Application:
应用:

乡村道路，二级公路，家庭小院，公园.....
Country road,Secondary roads,Family garden,Park.....

产品型号 Model no	灯体尺寸(mm) Lamp Size(mm)	光伏板尺寸(mm) Solar Panel Size(mm)	光伏板(单晶硅) Solar Panel(Mono)	电池容量 Battery Capacity	流明 Lumen	灯珠数 LED QTY	安装高度 Installation height	调控方式 Control Mode	感应 Induction	发光角度 Beam angle
SL-CSYH-S	670*240*65	566*236	5V25W	3.2V15AH	2000LM	5054*77PCS	3-4M	Light control+Remote control	Yes	70°140
SL-CSYH-L	840*240*65	736*236	5V35W	3.2V30AH	3000LM	5054*119PCS	4-5M	Light control+Remote control	Yes	70°140

Split type solar
street light
with inner battery series

分体式内置电池太阳能路灯系列





Basic Parameters
基础参数

防护等级Waterproof grade	IP65
充电时间Charging time	6-8H
亮灯时间Lighting time	12H
色温Cct for choosing	6500K
工作温度Operation temperature	-40℃~+60℃
显色指数 Cri	70-90

Product features:
产品特点:

压铸一体成型工艺，散热好，大功率。
Die-casting aluminum with Integrated Molding Process,high heat-dissipation,high power wattage.

全新材料生产的透镜，耐紫外线，抗衰老，高透光率达94%。
UV resistant lens,made from new,never-used material,durable,high transmittance up to 94%.

高转化率单晶硅光伏板。
Equipped with high-efficiency monocrystalline silicon panel.

全新A品磷酸铁锂电池。
New lithium iron phosphare class A battery.

Application:
应用:

城市主干道或二级公路，大型广场，公园.....
Main road,Secondary roads,Square,Park.....

产品型号 Model no	灯体尺寸(mm) Lamp Size(mm)	光伏板(单晶硅) Solar Panel(Mono)	电池 Battery	流明 Lumen	灯珠数 LED QTY	安装高度 Installation height	调控方式 Control Mode	感应 Induction	发光角度 Beam angle
SL-SSJP-S	600*245*110	18V120W	3.2V140AH	16000LM	5054*120PCS	8-10M	Light control+Remote control	NO	80°150
SL-SSJP-L	790*265*120	18V160W	3.2V200AH	18000LM	5054*200PCS	9-12M	Light control+Remote control	NO	80°150



Basic Parameters
基础参数

防护等级Waterproof grade	IP65
充电时间Charging time	4-5H
亮灯时间Lighting time	12H
色温Cct for choosing	6500K
工作温度Operation temperature	-40℃~+60℃
显色指数 Cri	70-90

Product features:
产品特点:

压铸一体成型工艺，散热好，大功率。
Die-casting aluminum with Integrated Molding Process,high heat-dissipation,high power wattage.

全新材料生产的透镜，耐紫外线，抗衰老，高透光率达94%。
UV resistant lens,made from new,never-used material,durable,high transmittance up to 94%.

高转化率单晶硅光伏板。
Equipped with high-efficiency monocrystalline silicon panel.

全新A品磷酸铁锂电池。
New lithium iron phosphare class A battery.

Application:
应用:

乡村道路，二级公路，家庭小院，公园.....
Country road,Secondary roads,Family garden,Park.....

产品型号 Model no	灯体尺寸(mm) Lamp Size(mm)	光伏板(单晶硅) Solar Panel(Mono)	电池 Battery	流明 Lumen	灯珠数 LED QTY	安装高度 Installation height	调控方式 Control Mode	感应 Induction	发光角度 Beam angle
SL-SSJD-50	500*210*85	5V60W	3.2V60AH	8000LM	5054*60PCS	5-7M	Light control+Remote control	NO	80°150
SL-SSJD-55	550*225*90	5V100W	3.2V75AH	9000LM	5054*100PCS	6-8M	Light control+Remote control	NO	80°150
SL-SSJD-60	600*245*90	5V100W	3.2V90AH	12000LM	5054*150PCS	8-10M	Light control+Remote control	NO	80°150
SL-SSJD-66	660*265*100	5V140W	3.2V120AH	13800LM	5054*200PCS	9-12M	Light control+Remote control	NO	80°150



Basic Parameters
基础参数

防护等级Waterproof grade	IP65
充电时间Charging time	6-8H
亮灯时间Lighting time	12H
色温Cct for choosing	6500K
工作温度Operation temperature	-40℃~+60℃
显色指数 Cri	70-90

Product features:
产品特点:

压铸一体成型工艺，散热好，大功率。
Die-casting aluminum with Integrated Molding Process,high heat-dissipation,high power wattage.

全新材料生产的透镜，耐紫外线，抗衰老，高透光率达94%。
UV resistant lens,made from new,never-used material,durable,high transmittance up to 94%.

高转化率单晶硅光伏板。
Equipped with high-efficiency monocrystalline silicon panel.

全新A品磷酸铁锂电池。
New lithium iron phosphare class A battery.

Application:
应用:

乡村道路，二级公路，家庭小院，公园.....
Country road,Secondary roads,Family garden,Park.....

产品型号 Model no	灯体尺寸(mm) Lamp Size(mm)	光伏板(单晶硅) Solar Panel(Mono)	电池 Battery	流明 Lumen	灯珠数 LED QTY	安装高度 Installation height	调控方式 Control Mode	感应 Induction	发光角度 Beam angle
SL-SSXJD-M	580*250*90	18V100W	3.2V135AH	12000LM	5054*100PCS	8-10M	Light control+Remote control	NO	80*150
SL-SSXJD-P	580*250*90	5V80W	3.2V75AH	9000LM	5054*100PCS	6-8M	Light control+Remote control	NO	80*150



Basic Parameters
基础参数

防护等级Waterproof grade	IP65
充电时间Charging time	4-5H
亮灯时间Lighting time	12H
色温Cct for choosing	6500K
工作温度Operation temperature	-40℃~+60℃
显色指数 Cri	70-90

Product features:
产品特点:

压铸一体成型工艺，散热好，大功率。
Die-casting aluminum with Integrated Molding Process,high heat-dissipation,high power wattage.

全新材料生产的透镜，耐紫外线，抗衰老，高透光率达94%。
UV resistant lens,made from new,never-used material,durable,high transmittance up to 94%.

高转化率单晶硅光伏板。
Equipped with high-efficiency monocrystalline silicon panel.

全新A品磷酸铁锂电池。
New lithium iron phosphare class A battery.

Application:
应用:

乡村道路，二级公路，家庭小院，公园.....
Country road,Secondary roads,Family garden,Park.....

产品型号 Model no	灯体尺寸(mm) Lamp Size(mm)	光伏板(单晶硅) Solar Panel(Mono)	电池 Battery	流明 Lumen	灯珠数 LED QTY	安装高度 Installation height	调控方式 Control Mode	感应 Induction	发光角度 Beam angle
SL-SSYS-M	520*210*70	18V60W	3.2V45AH	9000LM	5054*60PCS	6-8M	Light control+Remote control	NO	80*150
SL-SSYS-P	520*210*70	5V60W	3.2V60AH	8000LM	5054*60PCS	5-7M	Light control+Remote control	NO	80*150



Basic Parameters
基础参数

防护等级Waterproof grade	IP65
充电时间Charging time	6-8H
亮灯时间Lighting time	12H
色温Cct for choosing	6500K
工作温度Operation temperature	-40℃~+60℃
显色指数 Cri	70-90

Product features:
产品特点:

多面角度发光，照射面积更广泛。
Multi sided angle emission,wider illuminated area.

压铸一体成型工艺，散热好，大功率。
Die-casting aluminum with Integrated Molding Process,high heat-dissipation,high power wattage.

全新材料生产的透镜，耐紫外线，抗衰老，高透光率达94%。
UV resistant lens,made from new,never-used material,durable,high transmittance up to 94%.

高转化率单晶硅光伏板。
Equipped with high-efficiency monocrystalline silicon panel.

全新A品磷酸铁锂电池。
New lithium iron phosphare class A battery.

Application:
应用:

乡村道路，二级公路，家庭小院，公园.....
Country road,Secondary roads,Family garden,Park.....

产品型号 Model no	灯体尺寸(mm) Lamp Size(mm)	光伏板(单晶硅) Solar Panel(Mono)	电池 Battery	流明 Lumen	灯珠数 LED QTY	安装高度 Installation height	调控方式 Control Mode	感应 Induction	发光角度 Beam angle
SL-SSHL4-S	550*235*82	5V60W	3.2V45AH	8000LM	5054*120PCS	5-7M	Light control+Remote control	Optional	70*180
SL-SSHL4-L	630*255*85	5V80W	3.2V60AH	9000LM	5054*160PCS	6-8M	Light control+Remote control	Optional	70*180



Basic Parameters
基础参数

防护等级Waterproof grade	IP65
充电时间Charging time	4-5H
亮灯时间Lighting time	12H
色温Cct for choosing	6500K
工作温度Operation temperature	-40℃~+60℃
显色指数 Cri	70-90

Product features:
产品特点:

多面角度发光，照射面积更广泛。
Multi sided angle emission,wider illuminated area.

压铸一体成型工艺，散热好，大功率。
Die-casting aluminum with Integrated Molding Process,high heat-dissipation,high power wattage.

全新材料生产的透镜，耐紫外线，抗衰老，高透光率达94%。
UV resistant lens,made from new,never-used material,durable,high transmittance up to 94%.

高转化率单晶硅光伏板。
Equipped with high-efficiency monocrystalline silicon panel.

全新A品磷酸铁锂电池。
New lithium iron phosphare class A battery.

Application:
应用:

乡村道路，二级公路，家庭小院，公园.....
Country road,Secondary roads,Family garden,Park.....

产品型号 Model no	灯体尺寸(mm) Lamp Size(mm)	光伏板(单晶硅) Solar Panel(Mono)	电池 Battery	流明 Lumen	灯珠数 LED QTY	安装高度 Installation height	调控方式 Control Mode	感应 Induction	发光角度 Beam angle
SL-SSH2-S	550*230*85	6V80W	3.2V60AH	8000LM	5054*92PCS	5-7M	Light control+Remote control	NO	70*180
SL-SSH2-L	590*260*80	6V90W	3.2V75AH	9000LM	5054*98PCS	6-8M	Light control+Remote control	NO	70*180



Basic Parameters
基础参数

防护等级Waterproof grade	IP65
充电时间Charging time	6-8H
亮灯时间Lighting time	12H
色温Cct for choosing	6500K
工作温度Operation temperature	-40℃~-+60℃
显色指数 Cri	70-90

Product features:
产品特点:

压铸一体成型工艺，散热好，大功率。
Die-casting aluminum with Integrated Molding Process,high heat-dissipation,high power wattage.

全新材料生产的透镜，耐紫外线，抗衰老，高透光率达94%。
UV resistant lens,made from new,never-used material,durable,high transmittance up to 94%.

高转化率单晶硅光伏板。
Equipped with high-efficiency monocrystalline silicon panel.

全新A品磷酸铁锂电池。
New lithium iron phosphore class A battery.

Application:
应用:

乡村道路，二级公路，家庭小院，公园.....
Country road,Secondary roads,Family garden,Park.....

产品型号 Model no	灯体尺寸(mm) Lamp Size(mm)	光伏板(单晶硅) Solar Panel(Mono)	电池 Battery	流明 Lumen	灯珠数 LED QTY	安装高度 Installation height	调控方式 Control Mode	感应 Induction	发光角度 Beam angle
SL-SSHL1-S	520*210*70	5V60W	3.2V45AH	8000LM	5054*60PCS	5-7M	Light control+Remote control	NO	70*145
SL-SSHL1-M	590*245*95	5V80W	3.2V60AH	9000LM	5054*100PCS	6-8M	Light control+Remote control	NO	70*145
SL-SSHL1-L	680*270*95	5V100W	3.2V75AH	9000LM	5054*102PCS	6-8M	Light control+Remote control	NO	70*145



Basic Parameters
基础参数

防护等级Waterproof grade	IP65
充电时间Charging time	4-5H
亮灯时间Lighting time	12H
色温Cct for choosing	6500K
工作温度Operation temperature	-40℃~-+60℃
显色指数 Cri	70-90

Product features:
产品特点:

压铸一体成型工艺，散热好，大功率。
Die-casting aluminum with Integrated Molding Process,high heat-dissipation,high power wattage.

全新材料生产的透镜，耐紫外线，抗衰老，高透光率达94%。
UV resistant lens,made from new,never-used material,durable,high transmittance up to 94%.

高转化率单晶硅光伏板。
Equipped with high-efficiency monocrystalline silicon panel.

全新A品磷酸铁锂电池。
New lithium iron phosphore class A battery.

Application:
应用:

乡村道路，二级公路，家庭小院，公园.....
Country road,Secondary roads,Family garden,Park.....

产品型号 Model no	灯体尺寸(mm) Lamp Size(mm)	光伏板(单晶硅) Solar Panel(Mono)	电池 Battery	流明 Lumen	灯珠数 LED QTY	安装高度 Installation height	调控方式 Control Mode	感应 Induction	发光角度 Beam angle
SL-SSJL-60	495*213*55	5V60W	3.2V45AH	8000LM	5054*60PCS	5-7M	Light control+Remote control	NO	70*145
SL-SSJL-120	495*213*55	5V60W	3.2V60AH	8000LM	5054*120PCS	5-7M	Light control+Remote control	NO	70*145
SL-SSJL-240	600*250*80	5V80W	3.2V60AH	9000LM	5054*240PCS	6-8M	Light control+Remote control	NO	70*145



Basic Parameters
基础参数

防护等级Waterproof grade	IP65
充电时间Charging time	6-8H
亮灯时间Lighting time	12H
色温Cct for choosing	6500K
工作温度Operation temperature	-40℃~+60℃
显色指数 Cri	70-90

Product features:
产品特点:

独特外观设计，简洁且流畅。
Unique appearance designing,concise and smooth.

钣金冲压工艺，有效降低成本并保持高品质。
Iron material with Sheet Metal Forming process,cost competitive and high quality.

全新材料生产的透镜，耐紫外线，抗衰老，高透光率达94%。
UV resistant lens,made from new,never-used material,durable,high transmittance up to 94%.

高转化率单晶硅光伏板。
Equipped with high-efficiency monocrystalline silicon panel.

全新A品磷酸铁锂电池。
New lithium iron phosphare class A battery.

Application:
应用:

乡村道路，二级公路，家庭小院，公园.....
Country road,Secondary roads,Family garden,Park.....

产品型号 Model no	灯体尺寸(mm) Lamp Size(mm)	光伏板(单晶硅) Solar Panel(Mono)	电池 Battery	流明 Lumen	灯珠数 LED QTY	安装高度 Installation height	调控方式 Control Mode	感应 Induction	发光角度 Beam angle
SL-SSPP-S	503*232*92	5V40W	3.2V30AH	3000LM	5054*60PCS	4-5M	Light control+Remote control	NO	70°140
SL-SSPP-M	582*261*108	5V50W	3.2V45AH	5000LM	5054*100PCS	5-6M	Light control+Remote control	NO	70°140

SL-SSPP-L	688*307*120	5V60W	3.2V60AH	7000LM	5054*150PCS	5-7M	Light control+Remote control	NO	70°140
-----------	-------------	-------	----------	--------	-------------	------	------------------------------	----	--------



Basic Parameters
基础参数

防护等级Waterproof grade	IP65
充电时间Charging time	4-5H
亮灯时间Lighting time	12H
色温Cct for choosing	6500K
工作温度Operation temperature	-40℃~+60℃
显色指数 Cri	70-90

Product features:
产品特点:

钣金冲压工艺，有效降低成本并保持高品质。
Iron material with Sheet Metal Forming process,cost competitive and high quality.

全新材料生产的透镜，耐紫外线，抗衰老，高透光率达94%。
UV resistant lens,made from new,never-used material,durable,high transmittance up to 94%.

高转化率单晶硅光伏板。
Equipped with high-efficiency monocrystalline silicon panel.

全新A品磷酸铁锂电池。
New lithium iron phosphare class A battery.

Application:
应用:

乡村道路，二级公路，家庭小院，公园.....
Country road,Secondary roads,Family garden,Park.....

产品型号 Model no	灯体尺寸(mm) Lamp Size(mm)	光伏板(单晶硅) Solar Panel(Mono)	电池 Battery	流明 Lumen	灯珠数 LED QTY	安装高度 Installation height	调控方式 Control Mode	感应 Induction	发光角度 Beam angle
SL-SSTB-S	600*265*96	6V60W	3.2V60AH	6000LM	5054*75PCS	5-7M	Light control+Remote control	NO	70°140
SL-SSTB-M	600*265*96	6V80W	3.2V80AH	7000LM	5054*75PCS	6-8M	Light control+Remote control	NO	70°140

SL-SSTB-L	600*265*96	6V100W	3.2V100AH	8000LM	5054*75PCS	7-9M	Light control+Remote control	NO	70°140
-----------	------------	--------	-----------	--------	------------	------	------------------------------	----	--------

Solar garden light series

太阳能庭院灯系列



Basic Parameters
基础参数

防护等级Waterproof grade	IP65
充电时间Charging time	4-5H
亮灯时间Lighting time	12H
色温Cct for choosing	6500K
工作温度Operation temperature	-40℃~+60℃
显色指数 Cri	70-90

Product features:
产品特点:

独特外观设计，简洁且流畅。
Unique appearance designing,concise and smooth.

钣金冲压工艺，有效降低成本并保持高品质。
Iron material with Sheet Metal Forming process,cost competitive and high quality.

全新材料生产的透镜，耐紫外线，抗衰老，高透光率达94%。
UV resistant lens,made from new,never-used material,durable,high transmittance up to 94%.

高转化率单晶硅光伏板。
Equipped with high-efficiency monocrystalline silicon panel.

全新A品磷酸铁锂电池。
New lithium iron phosphore class A battery.

Application:
应用:

小型广场，公园，家庭庭院，停车场.....
Square,Park,Family garden, Parking lot.....



产品型号 Model no	灯体尺寸(mm) Lamp Size(mm)	光伏板尺寸(mm) Solar Panel Size(mm)	光伏板(单晶硅) Solar Panel(Mono)	电池容量 Battery Capacity	流明 Lumen	灯珠数 LED QTY	安装高度 Installation height	调控方式 Control Mode	感应 Induction	发光角度 Beam angle
SL-SGXH-S	900*400*219	896*396	5V65W	3.2V45AH	8000LM	5054*200PCS	5-7M	Light control+Remote control	Yes	70°140
SL-SGXH-L	1120*400*229	1116*396	5V90W	3.2V60AH	9000LM	5054*300PCS	6-8M	Light control+Remote control	Yes	70°140



SL-SGXH-A



SL-SGXH-O



Basic Parameters
基础参数

防护等级Waterproof grade	IP65
充电时间Charging time	4-5H
亮灯时间Lighting time	12H
色温Cct for choosing	6500K
工作温度Operation temperature	-40℃~+60℃
显色指数 Cri	70-90

Product features:
产品特点:

独特外观设计，简洁且流畅。
Unique appearance designing,concise and smooth.

钣金冲压工艺，有效降低成本并保持高品质。
Iron material with Sheet Metal Forming process,cost competitive and high quality.

全新材料生产的透镜，耐紫外线，抗衰老，高透光率达94%。
UV resistant lens,made from new,never-used material,durable,high transmittance up to 94%.

高转化率单晶硅光伏板。
Equipped with high-efficiency monocrystalline silicon panel.

全新A品磷酸铁锂电池。
New lithium iron phosphate class A battery.

Application:
应用:

小型广场，公园，家庭庭院，停车场.....
Square,Park,Family garden, Parking lot.....

产品型号 Model no	灯体尺寸(mm) Lamp Size(mm)	光伏板尺寸(mm) Solar Panel Size(mm)	光伏板(单晶硅) Solar Panel(Mono)	电池容量 Battery Capacity	流明 Lumen	灯珠数 LED QTY	安装高度 Installation height	调控方式 Control Mode	感应 Induction	发光角度 Beam angle
SL-SGXH-A	580*580*105	576*576	5V50W	3.2V45AH	8000LM	5054*200PCS	5-7M	Light control+Remote control	Yes	90°360
SL-SGXH-O	580*580*105	576*576	5V50W	3.2V45AH	8000LM	5054*200PCS	5-7M	Light control+Remote control	Yes	90°360

Solar flood light series

太阳能投光灯系列





产品型号 Model no	灯体尺寸(mm) Lamp Size(mm)	光伏板(单晶硅) Solar Panel(Mono)	电池 Battery	流明 Lumen	灯珠数 LED QTY	安装高度 Installation height	调控方式 Control Mode	感应 Induction	发光角度 Beam angle
SL-SFJL-S	345*300*100	5V60W	3.2V60AH	9000LM	5054*160PCS	6-7M	Light control+Remote control	NO	90

SL-SFJL-L	420*360*100	5V80W	3.2V75AH	10000LM	5054*216PCS	6-8M	Light control+Remote control	NO	90
-----------	-------------	-------	----------	---------	-------------	------	------------------------------	----	----

SL-SFJL-L	420*360*100	18V100W	3.2V120AH	12000LM	5054*216PCS	8-10M	Light control+Remote control	NO	90
-----------	-------------	---------	-----------	---------	-------------	-------	------------------------------	----	----



Basic Parameters
基础参数

防护等级Waterproof grade	IP65
充电时间Charging time	4-5H
亮灯时间Lighting time	12H
色温Cct for choosing	6500K
工作温度Operation temperature	-40℃~+60℃
显色指数 Cri	70-90

Product features:
产品特点:

电池壳大，可以装大容量电池。
Size of battery box is huge that could load high capacity battery.

压铸一体成型工艺，散热好，大功率。
Die-casting aluminum with Integrated Molding Process,high heat-dissipation,high power wattage.

全新材料生产的透镜，耐紫外线，抗衰老，高透光率达94%。
UV resistant lens,made from new,never-used material,durable,high transmittance up to 94%.

高转化率单晶硅光伏板。
Equipped with high-efficiency monocrystalline silicon panel.

全新A品磷酸铁锂电池。
New lithium iron phosphare class A battery.

Application:
应用:

小型广场，公园，家庭庭院，停车场.....
Square,Park,Family garden, Parking lot.....



Basic Parameters
基础参数

防护等级Waterproof grade	IP65
充电时间Charging time	4-5H
亮灯时间Lighting time	12H
色温Cct for choosing	6500K
工作温度Operation temperature	-40℃~+60℃
显色指数 Cri	70-90

Product features:
产品特点:

压铸一体成型工艺，散热好，大功率。
Die-casting aluminum housing with Integrated Molding Process,high heat-dissipation,high power wattage.

全新材料生产的透镜，耐紫外线，抗衰老，高透光率达94%。
UV resistant lens,made from new,never-used material,durable,high transmittance up to 94%.

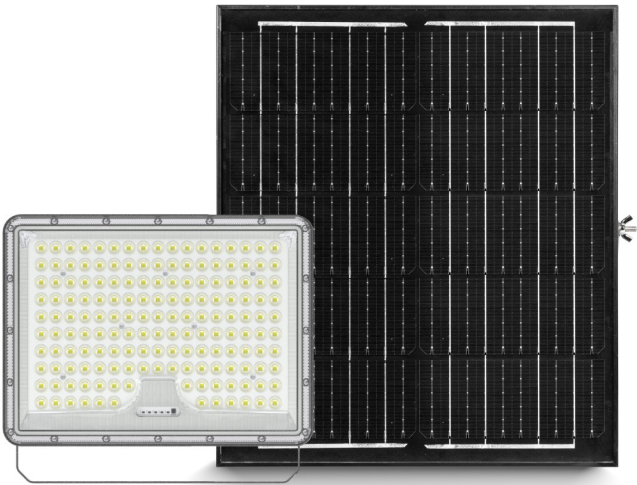
高转化率单晶硅光伏板。
Equipped with high-efficiency monocrystalline silicon panel.

全新A品磷酸铁锂电池。
New lithium iron phosphare class A battery.

Application:
应用:

小型广场，公园，家庭庭院，停车场.....
Square,Park,Family garden, Parking lot.....

产品型号 Model no	灯体尺寸(mm) Lamp Size(mm)	光伏板(单晶硅) Solar Panel(Mono)	电池 Battery	流明 Lumen	灯珠数 LED QTY	安装高度 Installation height	调控方式 Control Mode	感应 Induction	发光角度 Beam angle
SL-SFTL-50	185*163*50	5V20W	3.2V15AH	1000LM	3030*64PCS	3M	Light control+Remote control	NO	90
SL-SFTL-100	237*204*55	5V25W	3.2V20AH	2000LM	3030*100PCS	3M	Light control+Remote control	NO	90
SL-SFTL-200	249*289*55	5V30W	3.2V25AH	3500LM	3030*156PCS	3-5M	Light control+Remote control	NO	90
SL-SFTL-300	294*330*55	5V35W	3.2V30AH	5000LM	3030*210PCS	4-5M	Light control+Remote control	NO	90
SL-SFTL-400	376*407*55	5V40W	3.2V45AH	6000LM	3030*380PCS	5-6M	Light control+Remote controll	NO	90



Basic Parameters
基础参数

防护等级Waterproof grade	IP65
充电时间Charging time	4-5H
亮灯时间Lighting time	12H
色温Cct for choosing	6500K
工作温度Operation temperature	-40℃~+60℃
显色指数 Cri	70-90

Product features:
产品特点:

简约大气，三种亮灯模式可自由切换达到最佳节能效果。
Concise and smooth designing,3 lighting modes freely switched to the best saving target.

压铸一体成型工艺，散热好，大功率。
Die-casting aluminum with Integrated Molding Process,high heat-dissipation,high power wattage.

进口原料高透光率光学透镜，无光斑，照射面积广，穿透力强。
Imported material high transmittance lens,no facular,wide illuminated area,strong penetrating power.

高转化率单晶硅光伏板。
Equipped with high-efficiency monocrystalline silicon panel.

全新A品磷酸铁锂电池。
New lithium iron phosphore class A battery.

Application:
应用:

小型广场，公园，家庭庭院，停车场.....
Square,Park,Family garden, Parking lot.....

产品型号 Model no	灯体尺寸(mm) Lamp Size(mm)	光伏板(单晶硅) Solar Panel(Mono)	电池 Battery	流明 Lumen	灯珠数 LED QTY	安装高度 Installation height	调控方式 Control Mode	感应 Induction	发光角度 Beam angle
SL-SFZH-100	271*182*58	6V40W	3.2V30AH	5000LM	5054*70PCS	4-5M	Light control+Remote control	YES	90
SL-SFZH-200	311*222*58	6V50W	3.2V45AH	6000LM	5054*112PCS	5-6M	Light control+Remote control	YES	90
SL-SFZH-300	350*260*58	6V60W	3.2V60AH	9000LM	5054*170PCS	5-7M	Light control+Remote control	YES	90
SL-SFZH-400	389*300*58	6V70W	3.2V60AH	9500LM	5054*220PCS	6-8M	Light control+Remote control	YES	90



Basic Parameters
基础参数

防护等级Waterproof grade	IP65
充电时间Charging time	4-5H
亮灯时间Lighting time	12H
色温Cct for choosing	6500K
工作温度Operation temperature	-40℃~+60℃
显色指数 Cri	70-90

Product features:
产品特点:

压铸一体成型工艺，散热好。
Die-casting aluminum with Integrated Molding Process,high heat-dissipation.

全新材料生产的透镜，耐紫外线，抗衰老，高透光率达94%。
UV resistant lens,made from new,never-used material,durable,high transmittance up to 94%.

高转化率单晶硅光伏板。
Equipped with high-efficiency monocrystalline silicon panel.

全新A品磷酸铁锂电池。
New lithium iron phosphore class A battery.

Application:
应用:

小型广场，公园，家庭庭院，停车场.....
Square,Park,Family garden, Parking lot.....

产品型号 Model no	灯体尺寸(mm) Lamp Size(mm)	光伏板(单晶硅) Solar Panel(Mono)	电池 Battery	流明 Lumen	灯珠数 LED QTY	安装高度 Installation height	调控方式 Control Mode	感应 Induction	发光角度 Beam angle
SL-SFXL-S	230*172*45	5V20W	3.2V15AH	1000LM	5054*60PCS	3M	Light control+Remote control	NO	90
SL-SFXL-M	267*190*45	5V25W	3.2V20AH	2000LM	5054*84PCS	3-4M	Light control+Remote control	NO	90

SL-SFXL-L	305*208*45	5V30W	3.2V25AH	3000LM	5054*112PCS	4-5M	Light control+Remote control	NO	90
-----------	------------	-------	----------	--------	-------------	------	------------------------------	----	----